

More Far East City Hotels

Shown here are three of the additional cities in which we are able to offer accommodation. If you need accommodation somewhere that is not listed, please ask your travel agent to call us for a quotation.

KOREA TRAVEL TIPS

- **Time:** GMT +9
- **Flying Time from UK:** Approx. 12 hours
- **Language:** Korean.
- **Currency:** Won (KRW)
£1 = KRW 1883 approx.
- **Departure Tax:** KRW 27500 for international departures, incorporated in ticket.
- **Visa Requirements:** Not required by British citizens for stays of up to three months.
- **Tourist Information:** Korea National Tourism Organisation, New Zealand House, Haymarket, London SW1Y 4TQ. Tel: 0207 321 2535.
www.uk.or.kr

More useful information, including detailed climate data and recommended immunisations, can be found on pages 5 and 112.

TAIWAN TRAVEL TIPS

- **Time:** GMT +8
- **Flying Time from UK:** Approx. 15.5 hours
- **Language:** Mandarin, Taiwanese, English.
- **Currency:** New Taiwan Dollar (TWD)
£1 = TWD 58 approx.
- **Departure Tax:** TWD 300 for international departures, incorporated in the air fare.
- **Visa Requirements:** UK citizens may stay up to 30 days without a visa provided that onward travel is confirmed.
- **Tourist Information:** Taipei Representative Office in the UK, 50 Grosvenor Gardens, London SW1W 0EB. Tel: 0207 881 2650.
www.roc-taiwan.org.uk

More useful information, including recommended immunisations, can be found on pages 5 and 112.

INDONESIA TRAVEL TIPS – page 74.

Other Far East Hotel Prices

Price per person, per night room only (unless otherwise stated), in £	Share twin	Single
SEOUL, KOREA		
Koreana Hotel		
01Jan06-28Feb06	62	124
01Mar06-31Mar06	55	109
01Apr06-30Jun06	76	15
01Jul06-31Aug06	67	134
01Sep06-30Nov06	69	137
01Dec06-31Dec06	61	122
Hotel Sofitel Ambassador		
01Jan06-28Feb06	44	87
01Mar06-30Jun06	51	102
01Jul06-31Aug06	44	87
01Sep06-30Nov06	51	102
01Dec06-31Dec06	44	87
TAIPEI, TAIWAN		
Howard Plaza Taipei *		
01Jan06-28Feb06	38	76
01Mar06-31Mar06	44	87
01Apr06-30Jun06	47	93
01Jul06-31Aug06	40	80
01Sep06-30Nov06	47	93
01Dec06-28Feb07	40	80
01Mar07-31Mar07	47	93
Grand Formosa Regent *		
01Jan06-28Feb06	61	114
01Mar06-31Mar06	71	134
01Apr06-30Jun06	77	146
01Jul06-31Aug06	67	126
01Sep06-30Nov06	77	146
01Dec06-28Feb07	67	126
01Mar07-31Mar07	77	146
JAKARTA, INDONESIA		
Alila Jakarta		
(inc. breakfast) 01Jan06-31Mar07	21	40
Mandarin Oriental		
(inc. breakfast) 01Jan06-31Mar07	32	58

*Supplements may apply during trade show periods.

Seoul – Hotels

KOREANA HOTEL ★★★★★

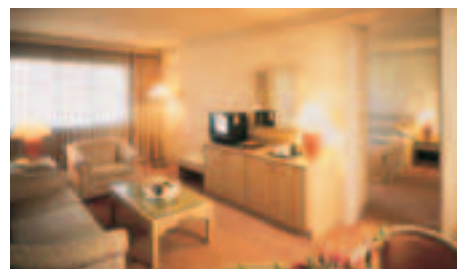


Location: Located in the centre of Seoul, close to commercial districts, shopping districts and many of the city's tourist attractions.

Accommodation: 345 air-conditioned guestrooms with TV, minibar, hairdryer and internet line.

Facilities: Restaurants include Arirang for local dishes, Great Shanghai for Chinese and Danube for international fare. There is also a fitness centre and a business centre.

HOTEL SOFITEL AMBASSADOR ★★★★★



Location: Prime location in the heart of Seoul, within easy reach of the commercial, sightseeing and shopping districts.

Accommodation: 414 spacious rooms with satellite TV, minibar, hairdryer, safety deposit box, radio, internet access and IDD telephone.

Facilities: Six restaurants and bars offering delicacies from all over the world, fitness club with sauna, swimming pool, hydrotherapy centre and gymnasium.

Taipei – Hotels

HOWARD PLAZA TAIPEI ★★★★★☆



Location: Ideally located in the heart of Taipei's bustling business and shopping district near the World Trade Centre and many places of interest.

Accommodation: 606 guestrooms equipped with private facilities, TV with pay movies, minibar, hairdryer, in-room safe and room service.

Facilities: Ten restaurants specialising in Oriental and western cuisine, one bar, an outdoor pool, sauna and fitness centre.

GRAND FORMOSA REGENT ★★★★★



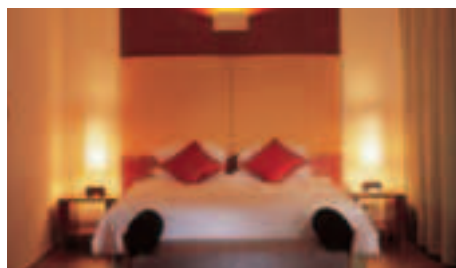
Location: Surrounded by a park on Taipei's main boulevard, this hotel offers easy access to the city's business and commercial districts.

Accommodation: 539 large rooms with welcome fruit and tea, satellite TV and minibar.

Facilities: For the best of international cuisine try one of ten restaurants and lounges and, for relaxation, try the Avance fitness centre, health spa and heated roof-top pool.

Jakarta – Hotels

ALILA JAKARTA ★★★★★☆

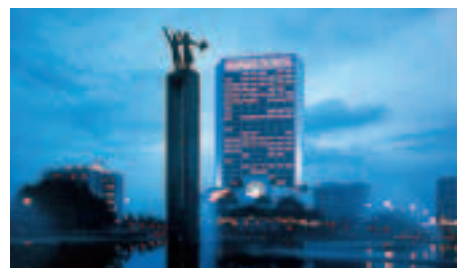


Location: A new, modern and contemporary hotel located in the heart of the business district, close to many of the city's historical landmarks.

Accommodation: 218 guestrooms with satellite TV, minibar, tea/coffee making facilities and a safe.

Facilities: These are extensive and impressive and include a state of the art gym, spa, outdoor swimming pool with bar, wine shop, Buzz - Alila Jakarta's flagship restaurant – and a lobby lounge.

MANDARIN ORIENTAL ★★★★★



Location: Ideally located at the apex of Jakarta's Golden Triangle – the business, shopping and entertainment hub of the city.

Accommodation: 424 spacious guestrooms with satellite TV, minibar and tea/coffee making facilities.

Facilities: A wide choice of restaurants featuring Italian, Chinese, Japanese and European cuisine. The Physique health club has a fully equipped gym, sauna, swimming pool and sun deck.